

< Parking Lot

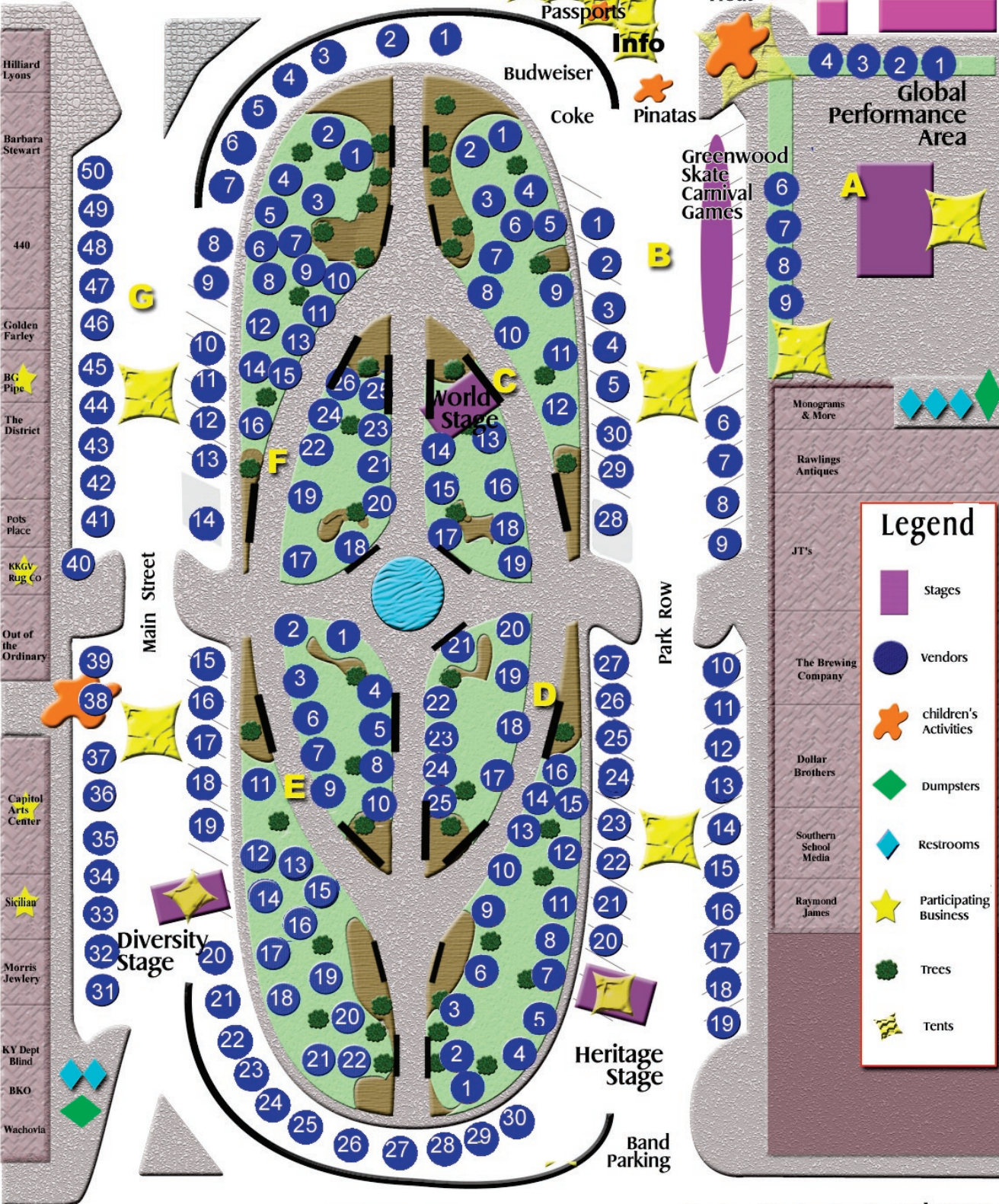
Barbara Stewart, Holland House, Spirit of Hope, Todd & Boeckmann, Pierce Simpson Shadoan, Edward Jones, Moore Insur, Ren Hair, Lot 916

Hooks, Inflatables, Parking Lot >

State Street

Hospitality, Passports, Tables & chairs, Info

Festival Float



Hilliard Lyons
Barbara Stewart
440
Golden Farley
BG Pipe
The District
Pots Place
KKGV Rug Co
Out of the Ordinary
Capitol Arts Center
Sicilian
Morris Jewelry
KY Dept Blind
BKO
Wachovia

Monograms & More
Rawlings Antiques
JT's
The Brewing Company
Dollar Brothers
Southern School Media
Raymond James

Legend

- Stages (purple square)
- Vendors (blue circle)
- children's Activities (orange star)
- Dumpsters (green diamond)
- Restrooms (light blue diamond)
- Participating Business (yellow star)
- Trees (green tree)
- Tents (yellow star)

College Street

Poster Contest - Courthouse > ^

Area Bank, Morgan Keegan, Kilgore, Insurance Specialists, Spencer's Coffeehouse, Coffman & Kirwan, Durbin Building, Holland CPA, Fountain Square Church

Exhibitors - Booth Assignment

A: Parking lot area.

Spaces A1-A9

- A1: _____
- A2: _____
- A3: _____
- A4: _____
- A5: _____
- A6: _____
- A7: _____
- A8: _____
- A9: _____
- A10: Willie Rascoe Woodworking Workshops

B: Park Row street area.

Spaces B1-B30

- B1: Lotus Dancers - Middle East Dance
- B2: Delaire Rowe - World Flag Activity
- B3: BG International Center Chess
- B4: BG International Center Chess
- B5: _____
- B6: _____
- B7: _____
- B8: Eastern European art, photos - CROATIA
- B9: East-West Kung Fu Academy
- B10: Linda Credeur - Hula Halos
- B11: Linda Credeur - Hula Halos
- B12: African Imports
- B13: Human Rights Commission
- B14: Primax Windows
- B15: Farrells Development - art, scarves
- B16: _____
- B17: _____
- B18: _____
- B19: _____
- B20: Debbie's Lemonade Factory
- B21: Doggy Dog
- B22: _____
- B23: _____
- B24: Coco Bongos
- B25: _____
- B26: _____
- B27: ALBANIA
- B28: East-West Kung Fu Academy
- B29: Shogun of Japan - Japanese food
- B30: _____

C: Right State St. quadrant.

Spaces C1-C19

- C1: SCA - UNITED KINGDOM - ENGLAND
- C2: SCA Medieval Fighting
- C3: SCA Medieval Fighting
- C4: SCA Medieval Fighting

C5: Lotus Dancers - Middle East Dance

C6: _____

C7: _____

- C8: Josefina Puga - Mexican food
- C9: BG International Center - artwork
- C10: Otavalos World - ECUADOR
- C11: BG International Center
- C12: Bosnian Club - BOSNIA
- C13: Hasima - Bosnian food
- C14: Debbie's Lemonade Factory
- C15: Mary Kendall Adoption - RUSSIA
- C16: Elegant Occasions - European pasteries
- C17: ARMENIA
- C18: The Sew & So's - soap and fabric crafts
- C19: AMA Bolivian Folk - BOLIVIA

D: Left State St. quadrant.

Spaces D1-D25

- D1: Vette City Lions Club - FRANCE
- D2: Horse Made Ice Cream
- D3: Horse Made Ice Cream
- D4: Horse Made Ice Cream
- D5: Horse Made Ice Cream
- D6: _____
- D7: _____
- D8: _____
- D9: Argentine Tango Society
- D10: Mrs. Bianca - fortune telling
- D11: Nath Kun - Cambodian food
- D12: Raw Whitty Designs - merchandise
- D13: Sunnah - Islamic merchandise
- D14: _____
- D15: Ejub Cavka - Chavapy
- D16: Osi Onyekwuluje - NIGERIA
- D17: Europe Bakery
- D18: Hawaiian Shaved Ice
- D19: _____
- D20: _____
- D21: US Bank
- D22: Burundi Drummers of East Africa
- D23: Burundi Drummers of East Africa
- D24: LIBERIA
- D25: _____

E: Right College St. quadrant.

Spaces E1-E22

- E1: Logan County Spanish Club - MEXICO
- E2: Logan County Spanish Club
- E3: La Luce Louisville
- E4: Mustafa - African Drum Workshops
- E5: Mustafa - African Drum Workshops
- E6: La Luce Louisville - food
- E7: La Luce del Mundo - food
- E8: Peace Craft

E9: WKU Modern Languages - GERMANY
E10: Peace Craft
E11: Brain Injury Assoc - German Food
E12: BGMU
E13: Taj Palace - Indian Cuisine
E14: _____
E15: Llontop Family - PERU
E16: _____
E17: _____
E18: Centro La Esperanza
E19: Centro La Esperanza
E20: _____
E21: African Drums, Dance & Crafts
E22: African Drums, Dance & Crafts

F: Left College St. quadrant.

Spaces F1-F26

F1: WKU International Students
F2: WKU International Students - INDIA
F3: WKU International Students
F4: WKU International Students
F5: WKU International Students - S. KOREA
F6: WKU International Students
F7: WKU International Students
F8: WKU International Students
F9: WKU International Students - TURKEY
F10: WKU International Students
F11: WKU International Students
F12: WKU International Students
F13: WKU International Students - THAILAND
F14: WKU International Students
F15: WKU International Students - TAIWAN
F16: WKU International Students
F17: Stuck on Thee - jewelry
F18: Stuck on Thee - jewelry
F19: Good Dog
F20: Deaf Community cultural display
F21: Deaf Community crafts
F22: Vanny Adams - Thai Cuisine
F23: _____
F24: Vanny Adams - Thai Cuisine
F25: _____
F26: _____

G9: Arlie White - Japanese & soul food
G10: Samad Mohiuddin - Indian food
G11: _____
G12: _____
G13: Warren Central Parrish Class - EL SALVADOR
G14: Warren Central Spanish Class - SPAIN
G15: _____
G16: _____
G17: _____
G18: Wah Lum Kung Fu
G19: _____
G20: _____
G21: _____
G22: Sister's Brew - Carribbean
G23: Farmer's Pork Rinds & Funnel cales
G24: _____
G25: John & Brad's BBQ
G26: John & Brad's BBQ
G27: John & Brad's BBQ
G28: Stage Generator
G29: _____
G30: _____
G31: _____
G32: _____
G33: The Sicilian - ITALY
G34: _____
G35: Kids on the Block puppetry & PAKISTAN
G36: Wah Lum Kung Fu
G37: Wah Lum Kung Fu
G38: Capitol Arts Center - JAPAN
G39: KY Museum - Hand Across Globe Quilt
G40: KKGV Rug Co - NEPAL
G41: Warren Central - Bull Fighting Demo
G42: Warren Central - cultural display
G43: Living Hope Children's activities
G44: Living Hope Children's activities
G45: Potter Children's Home - IRELAND
G46: BG Chamber of Commerce
G47: _____
G48: _____
G49: High Cross - SCOTLAND
G50: High Cross - Celtic culture

G: Main Street area.

Spaces G1-G50

G1: Chaney's Dairy Barn
G2: Chaney's Dairy Barn
G3: Parmley Concessions
G4: Parmley Concessions
G5: Project Noah - live Lion
G6: Project Noah - live Lion
G7: The Jarls of Lochlann - Celtic jewelry
G8: Arlie White - Japanese & soul food