

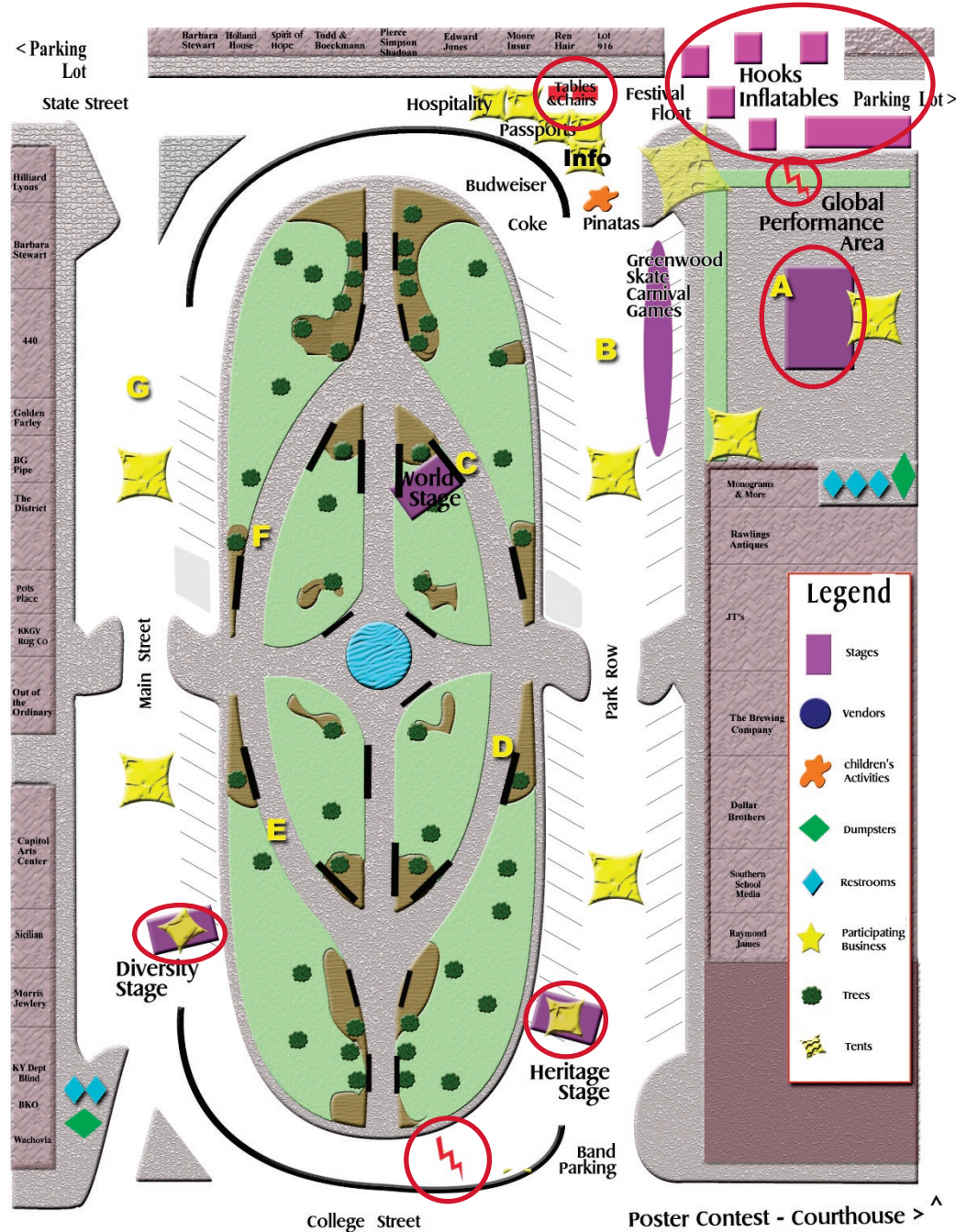
# Site Set up

## Hooks - FRI PM

- Inflatables - Drop inflatables on edge of parking lot along State St.
- Tables/Chairs - Place inside trailer
- Global Performance Stage - Place Dance Floor
- Diversity & Heritage Stage - Setup as close to edge of park as possible to allow through traffic. Small tents on stages. (see attached magnified area maps).
- Sound systems.
- generators

## Hooks - SAT AM

Finish - complete setup: Tables & Chair trailer by 7am; Heritage Stage by 8am; Diversity Stage by 9am; Global by 10am



## General Festival - FRI PM

- Tents - Set up 8 EZ ups & 6 pole tents & place in front corner of parking lot (for activities, hospitality, info, passports & dining areas)
- Beer & Soda & Carnival - Park trailers
- Dumpster & Potties - Place
- World - Set up World Stage (see attached magnified map)

## General Festival - SAT AM

- Tents - move tents into place for activities, hospitality, info, passports & dining areas (see attached magnified area maps.)
- Tables & Chairs - place under tents etc (list attached)
- Carnival - set up games (see attached magnified map)